



Polycom® *ReadiManager*® SE200

Optimized Conference Management and Scheduling



Benefits

Integrated application suite – A single solution for conference management, scheduling, and gatekeeping

High Definition – The only management and scheduling application to support Polycom RMX 2000™ real-time media conferencing platform and Polycom HDX 4000™, HDX 7000™, HDX 8000™, and HDX 9000™ series video endpoints

IP optimized – Centralizes management of IP video conferencing across the enterprise

Low cost of ownership – Eliminates the complexity and expense of deploying multiple standalone applications

Easy to use – An intuitive Web-based interface spans all device management, scheduling, conference management, and gatekeeper functions

Cost-effective – Invest only in the licenses you need and easily add licenses during network growth

High service success rate – Network/system monitoring alerts support personnel to current or potential problems, minimizing and preventing negative service level impact

Reliable and secure – Locked-down, embedded operating system and write-protected Flash memory-based virtual drives ensure a stable and secure environment for mission-critical conferencing

The Polycom *ReadiManager* SE200 management and scheduling solution greatly simplifies the deployment, maintenance, and use of video and audio conferencing throughout your organization

Powerful, flexible, and highly scalable, the Polycom *ReadiManager* SE200 management and scheduling solution provides conference administrators a single integrated application for conference and device management, scheduling, and gatekeeper functions.

Optimized to seamlessly integrate with the Polycom RMX 2000™ real-time media conferencing platform, Polycom *ReadiConvene*™ multipoint control unit (MCU) series, and Polycom video endpoints, the *ReadiManager* SE200 solution consolidates control of all manageable entities (including users, endpoints, platforms, and network resources) across all applications via a single intuitive interface.

Available in both network appliance and integrated application module (IAM) form factors, the *ReadiManager* SE200 solution allows organizations of any size to cost-effectively control conference variables without requiring specialized applications or standalone servers. With features like network monitoring and a zero-administration directory service to automatically maintain dialing addresses for all Polycom endpoints, the *ReadiManager* SE200 management and scheduling solution reduces support costs and optimizes network performance and availability. The streamlined user interface mirrors other Polycom administrative environments, allowing users to move seamlessly between platforms.

Make Great Things Happen with Polycom's *ReadiManager* SE200 Management and Scheduling Solution

In today's Internet driven world, the ability to conduct real time communication and collaboration has become critical to an organization's survival. As the market leader in voice, video and content collaboration and communications, our award-winning conference technology makes it easy for people to interact and maximize productivity — over any network, in just about any environment, anywhere around the globe. That's why more organizations worldwide use and prefer Polycom conferencing solutions. Because when people work together, great things happen. See how you too, can achieve great things with the *ReadiManager* SE200 management and scheduling solution.



VideoVoiceDataWeb



The ReadiManager SE200 solution is tightly integrated with the RMX Manager for device and conference management

Active Directory LDAP Integration

Integrates with Microsoft® Active Directory® version of LDAP/H.350 for automated user maintenance and authentication. Import enterprise groups and build provisioning profiles and policies.

Global Directory

User-centric global address book is accessible from any location worldwide; automatically inserts proper in-country dialing codes.

Intelligent Dialing

Initiating a call from a video endpoint is as easy as dialing a telephone.

Integrated CDR Reporting

Call Detail Records include parameters necessary to evaluate network utilization; report data can be viewed online or exported in .CSV format for use in third-party applications.

Least Cost Routing

Optimizes network resources and lowers costs by automatically using IP backbone connections to long distance ISDN locations for ad-hoc and scheduled calls.

External SQL Database Support (optional)

Optionally configurable to use an external SQL database as its primary database.

3rd Party Product Support

Provides open H.323 standard support of 3rd party IP endpoints, gateways, MCUs, and gatekeepers.

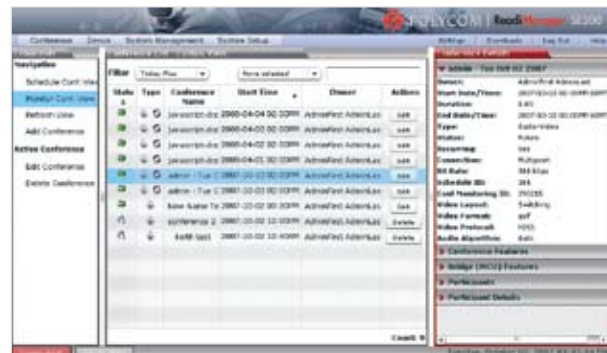
Firewall Traversal

Interfaces with Polycom's VBP™ series to help negate enterprise NAT and firewall traversal issues.

Scheduling & Conference Management

The ReadiManager SE200 management and scheduling solution enables do-it-yourself conference scheduling right from the desktop. An intelligent wizard-based interface prompts users to enter required conference information, resulting in faster, easier scheduling. Users can also schedule and manage conferences using their own Microsoft Outlook® or IBM® Lotus Notes® applications.

People can now choose how and when they meet – with the flexibility to create conferences that automatically connect participants, or “meet-me” conferences by dialing into/from a conference platform or bridge. They can place point-to-point, embedded multipoint or external MCU-based calls between almost any ISDN or IP video/voice communication system.



Features & Benefits

Increased user efficiency

- Fast and simple scheduling through a Web-based interface or Microsoft Outlook, IBM Lotus Notes; no new applications to learn
- Automatic calendar updates keep users current
- Active Directory integration simplifies making and scheduling calls by providing users access to global corporate directories
- Hassle-free conference scheduling for users eliminates the need for dedicated conferencing managers

Fully-leveraged conference assets

- Always-available access to video communication resources
- Seamless scheduling across most major conferencing vendor systems
- Automatic MCU selection allows scheduled calls to use the most appropriate MCU based on available resources or least cost routing

Improved conference management

- Pre-configured conference templates for simplified setup across users, roles, and conference feature sets
- Quick access to meeting and conference schedules helps easily identify potential conflicts
- On-the-fly parameter modification of in-progress scheduled conferences, including video layout, participant mute and un-mute, and conference duration
- The ReadiManager SE200 solution is tightly integrated with the RMX Manager for device and conference management

Advanced Gatekeeper

The *ReadiManager* SE200 gatekeeper makes IP and ISDN video communication as simple as using your telephone. Compliant with industry standards and operating seamlessly with other network services and existing network infrastructures, the *ReadiManager* SE200 management and scheduling system is easily deployed. It includes advanced features such as least cost routing and bandwidth management standard to ensure reliability, security, and effective cost control.

The intelligent network routing engine in the *ReadiManager* SE200 gatekeeper combines advanced features like automatic ISDN number provisioning, gatekeeper functionality, RTP statistics, and addressing for both IP and ISDN video calls to proactively resolve many network management issues. Other powerful features include Polycom OneDial™ intelligent call management solution, Conference On Demand and alternate IP/ISDN routing to simplify the video conferencing experience. Automatic endpoint registration, provisioning, and policy management also enable network administrators to be more productive.

Features & Benefits

Polycom OneDial call management solution – Hides confusing numbers, prefixes, codes, and network options (IP or ISDN) required to place your call; users simply select a name from a directory or enter a phone number-like ‘alias’ to launch a call

Conference On Demand* – Enables any Polycom video endpoint to dial multiple endpoints, turning any endpoint into an on-demand multipoint system (* Requires Polycom *ReadiConvene* or MGC™ conferencing bridge)

Policy management – Administrators can create policy management parameters to control bandwidth through segments of their video networks, apply network policies, and manage access to resources based on individual, group, or corporate-wide settings

Auto ISDN provisioning – Allows for auto provisioning of DID (ISDN) and E.164 numbers for automated deployment of video endpoints

Increased availability and security – Flags all call attempts from unregistered endpoints and allows administrators to predetermine whether the calls are automatically denied access; administrators can also keep NAT IP addresses confidential, preventing internal IP addresses from being accessed or sent outside the firewall

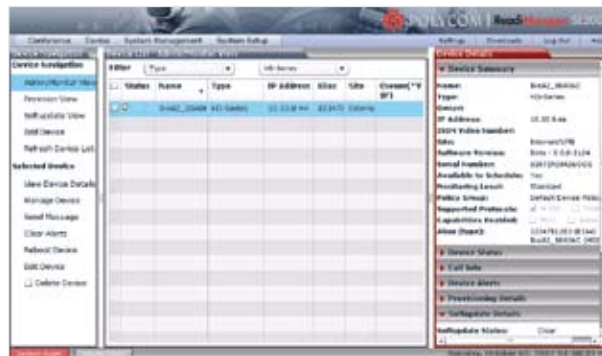
RTP statistics – Provides packet loss, jitter, and latency-over-time statistics to help analyze video call quality over the network

Alternate gatekeeper support – Provides greater network availability if the primary gatekeeper should fail or become inaccessible due to network failure

Sophisticated dial plan support – Enables a higher level of network security by controlling the routing and blocking of certain calls

Device Management

ReadiManager SE200 device management is a Web-based solution enabling centralized support of enterprise video and voice communication resources, including system management, software updates, provisioning, zero-administration directory services, remote video monitoring, and centralized diagnostics.



Features & Benefits

- Centralized control of video conferencing networks and resources to reduce support costs
- Automatic software updates to networked Polycom video devices – in groups or individually– to ensure timely, hassle-free system upgrades
- Profile-based provisioning of Polycom HDX Series, V-Series, and ViewStation® with simplified transfer of profiles to new systems for easier deployment and management
- Real-time monitoring and remote network management to ensure video conferencing network integrity and minimize downtime
- Direct integration of device monitoring into the RMX Manager Web interface

Comprehensive directory services make dialing video calls simple

- Dialing is as simple as pushing a button with the user-centric Global Directory and Polycom OneDial call management solution
- Integrates with gatekeeper functionality for seamless operation and management with Polycom OneDial call management solution
- E.164 support enables video calls to be dialed by name, extension, or alias

Maximizes investment in video conferencing network

- Aggregated network data reduces operating and administration costs
- Comprehensive management and control reduces IT resource support requirements.
- Integrates the Polycom MGC/MGC+ conferencing bridge and the RMX 2000 platform into a common network for efficient control and management of video conferencing resources

Platform Highlights

Security

- Secure appliance-based architecture
- Flash memory-based virtual hard drive
- Integration with existing IT access control mechanisms e.g., Active directory
- Lock-down of all nonessential services

Reliability

- Supports full redundancy with automatic failover
- Registrations survive system restart
- Multiple levels of disaster recovery

System Management

- Embedded setup wizard for initial configuration
- Role-based permission levels
- Policy-based device / resource controls

Conference Protocol Support

- E.164 Dialing
- H.320 (ISDN) and H.323 (IP) Video
- H.225.0 RAS and H.245 Media Control

Language Support

- English, French, German, International Spanish, and Simplified Chinese

System Capacities and Licensing

The ReadManager SE200 management and scheduling system scales from 25 up to 400 devices. The platform comes preconfigured with a baseline capacity of 25 devices. Additional device licensing and option licensing are available to increase the system size.

Where applicable, the number of concurrent calls supported by a ReadManager SE200 solution is derived from the number of device licenses at an approximate 3/10 ratio (calls/ devices). The exception is the 25-device baseline system, which supports up to 12 concurrent calls. For example, a 400-device licensed system supports up to 120 calls.

Device licenses are consumed/occupied based on the following rules:

- 1:1 basis for any device (MCU, GK, GW, endpoints - including personal endpoints, IP blades, and more) that can be added into the system through any means, including but not limited to, the user interface, registration for management services, or registration for Address Book services.
- 10:1 basis for "schedulable rooms" (10 schedulable rooms consume one license). System administrators and end-users do NOT occupy a device license.

Warranty

One (1) year limited hardware warranty: unit returned to Polycom factory within 30 days after receipt; 90 day software warranty: bug fixes / minor releases. Please contact your Polycom reseller or a Polycom sales representative for more details.

Service and Support

Service support agreements are available for the Polycom ReadManager SE200 network appliance or integrated application module, which provide for unlimited technical telephone support, software updates (bug fixes / release upgrades), and expedited replacement parts. Please contact your Polycom reseller or a Polycom sales representative for more details.

Appliance Specifications

- Form Factor: 1U 19" rack mount
- Height: 1.73" (44 mm)
- Width: 16.83" (430 mm)
- Depth: 15.35" (390 mm)
- Gross Weight: 19.8 lbs (9.0 kg)
- Power Supply: Full range 220W ATX AC power supply w/PFC
- AC Voltage: 100 - 240 VAC, 60-50 Hz, 4 Amps

Environmental

- Operating temperatures: 0° C to 40° C
- Storage temperatures: 0° C to 80° C
- Relative humidity: 5% to 90% (Non-condensing)

Regulatory Compliance

- Electromagnetic Emissions: FCC Class A, EN 55022 Class A, EN 61000-3-2/-3-3, CISPR 22 Class A
- Electromagnetic Immunity: EN 55024/CISPR 24, (EN 61000-4-2, EN 61000-4-3, EN 61000-4-4, EN 61000-4-5, EN 61000-4-6, EN 61000-4-8, EN 61000-4-11)

Safety

- EN 60950/IEC 60950 – Compliant
- UL Listed (USA)
- CUL Listed (Canada)
- CE Marking (Europe)

Other Requirements

External Database (optional)

- Microsoft SQL Server 2005

Network Client Hardware

- AMD Athlon™ or Intel® Pentium® processor, 200 MHz (or other comparable Windows® compatible PC-based platform)
- 512 MB RAM

Network Client Software

- Windows 2000 / Windows XP
- Microsoft Internet Explorer® 6.x or higher
- Adobe® Flash® Player version 9.0 or higher

Polycom Device Version Requirements

- HDX Series video endpoints (all software versions)
- V-Series video endpoint (all software versions)
- ViewStation video endpoint 7.x or higher
- ViewStation SP video endpoint 6.x or higher
- ViewStation FX/EX video endpoint 5.x or higher
- ViaVideo® personal video conferencing system 5.x or higher
- PVX™ software application 8.0.1 or higher
- MGC conferencing bridge 7.0.4 or higher
- RMX 2000 platform 1.0 or higher

H.323 Support of Third-Party Device and Equipment Support

Please contact your Polycom reseller or a Polycom sales representative for more details.

©2008 Polycom, Inc. All rights reserved.

Polycom, the Polycom logo, ReadManager, ViaVideo and ViewStation are registered trademarks and HDX 4000, HDX 7000, HDX 8000, HDX 9000, iPower, MGC, Polycom OneDial, PVX, ReadConvene, RMX 2000 and VBP are trademarks of Polycom, Inc. in the U.S. and various countries. All other trademarks are the property of their respective owners. Information in this document is subject to change without notice.



Polycom Headquarters:

4750 Willow Road, Pleasanton, CA 94588 (T) 1.800.POLYCOM (765.9266) for North America only.
For North America, Latin America and Caribbean (T) +1.925.924.6000, (F) +1.925.924.6100

Polycom EMEA:

270 Bath Road, Slough, Berkshire SL1 4DX, (T) +44 (0)1753 723000, (F) +44 (0)1753 723010

Polycom Asia Pacific:

8 Shenton Way, #11-01 Temasek Tower, Singapore 068811 (T) +65.6389.9200, (F) +65.6323.3022

Part No. 3726-17299-001 Rev. 07/08